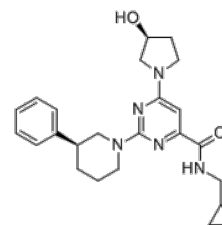


Product Name : LEI-401
Cat. No. : PC-38219
CAS No. : 2393840-15-6
Molecular Formula : C₂₄H₃₁N₅O₂
Molecular Weight : 421.545
Target : Phospholipase
Solubility : 10 mM in DMSO



Biological Activity

LEI-401 (LEI 401) is a potent, selective, brain active N-acylphosphatidylethanolamine phospholipase D (**NAPE-PLD**) inhibitor with K_i of 2.7 nM.

LEI-401 does not inhibit enzymes involved in the biosynthesis and degradation of the other endocannabinoid 2-AG, DAGL α or DAGL β , MAGL and α,β -hydrolase domain 6 (ABHD6).

LEI-401 reduced NAE levels in neuroblastoma cells and in the brain of freely moving mice, but not in NAPE-PLD KO cells and mice, respectively.

LEI-401 activated the hypothalamus-pituitary-adrenal (HPA) axis and impaired extinction of an aversive memory in mice, thereby mimicking the effects of cannabinoid CB1 receptor antagonism.

References

Mock ED, et al. *Nat Chem Biol.* 2020 Jun;16(6):667-675.

Mock ED, et al. *J Med Chem.* 2021 Jan 14;64(1):481-515.

Caution: Product has not been fully validated for medical applications. Lab Use Only!

E-mail: tech@probechem.com